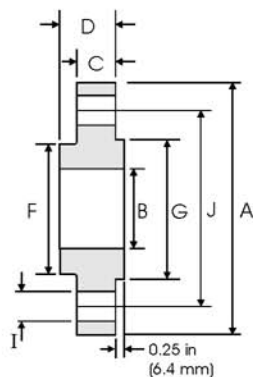




# Slip On Flanges - ANSI B16.5 Class 1500lbs



| Pipe              |   | Flange Data      |                 |                      |                | Hub          | Raised Face   | Drilling Data   |                    |                             | Weight  |
|-------------------|---|------------------|-----------------|----------------------|----------------|--------------|---------------|-----------------|--------------------|-----------------------------|---|
| Nominal Pipe Size |  | <b>A</b>         | <b>B</b>        | <b>C</b>             | <b>D</b>       | <b>F</b>     | <b>G</b>      | <b>H</b>        | <b>I</b>           | <b>J</b>                    |  |
|                   | Outside Diameter  | Overall Diameter | Inside Diameter | Flange Thickness min | Overall Length | Hub Diameter | Face Diameter | Number of Holes | Bolt Hole Diameter | Diameter of Circle of Holes | kg/ piece   |
|                   | in mm   | in mm            | in mm           | in mm                | in mm          | in mm        | in mm         |                 | in mm              | in mm                       |   |
| 1/2               | 0.840   | 4.750            | 0.880           | 0.880                | 1.250          | 1.500        | 1.380         | 4               | 0.880              | 3.250                       | 1.74  |
|                   | 21.30   | 120.6            | 22.40           | 22.40                | 31.70          | 38.10        | 35.10         |                 | 22.40              | 82.50                       |   |
| 3/4               | 1.050   | 5.120            | 1.090           | 1.000                | 1.380          | 1.750        | 1.690         | 4               | 0.880              | 3.500                       | 2.34  |
|                   | 26.70   | 130.0            | 27.70           | 25.40                | 35.00          | 44.40        | 42.90         |                 | 22.40              | 88.90                       |   |
| 1                 | 1.315   | 5.880            | 1.360           | 1.120                | 1.620          | 2.060        | 2.000         | 4               | 1.000              | 4.000                       | 3.44  |
|                   | 33.40   | 149.3            | 34.50           | 28.40                | 41.10          | 52.30        | 50.80         |                 | 25.40              | 101.6                       |   |
| 1 1/4             | 1.660   | 6.250            | 1.700           | 1.120                | 1.620          | 2.500        | 2.500         | 4               | 1.000              | 4.380                       | 3.91  |
|                   | 42.20   | 158.7            | 43.20           | 28.40                | 41.10          | 63.50        | 63.50         |                 | 25.40              | 111.2                       |   |
| 1 1/2             | 1.900   | 7.000            | 1.950           | 1.250                | 1.750          | 2.750        | 2.880         | 4               | 1.120              | 4.880                       | 5.36  |
|                   | 48.30   | 177.8            | 49.50           | 31.70                | 44.50          | 69.85        | 73.15         |                 | 28.40              | 123.9                       |   |
| 2                 | 2.375   | 8.500            | 2.440           | 1.500                | 2.250          | 4.120        | 3.620         | 8               | 1.000              | 6.500                       | 9.85  |
|                   | 60.30   | 215.9            | 62.00           | 38.10                | 57.15          | 104.6        | 91.90         |                 | 25.40              | 165.1                       |   |
| 2 1/2             | 2.875   | 9.620            | 2.940           | 1.620                | 2.500          | 4.880        | 4.120         | 8               | 1.120              | 7.500                       | 13.7  |
|                   | 73.00   | 244.3            | 74.70           | 41.10                | 63.50          | 123.9        | 104.6         |                 | 28.40              | 190.5                       |   |

## Notes

- Weights are based on manufacturer's data and are approximate.